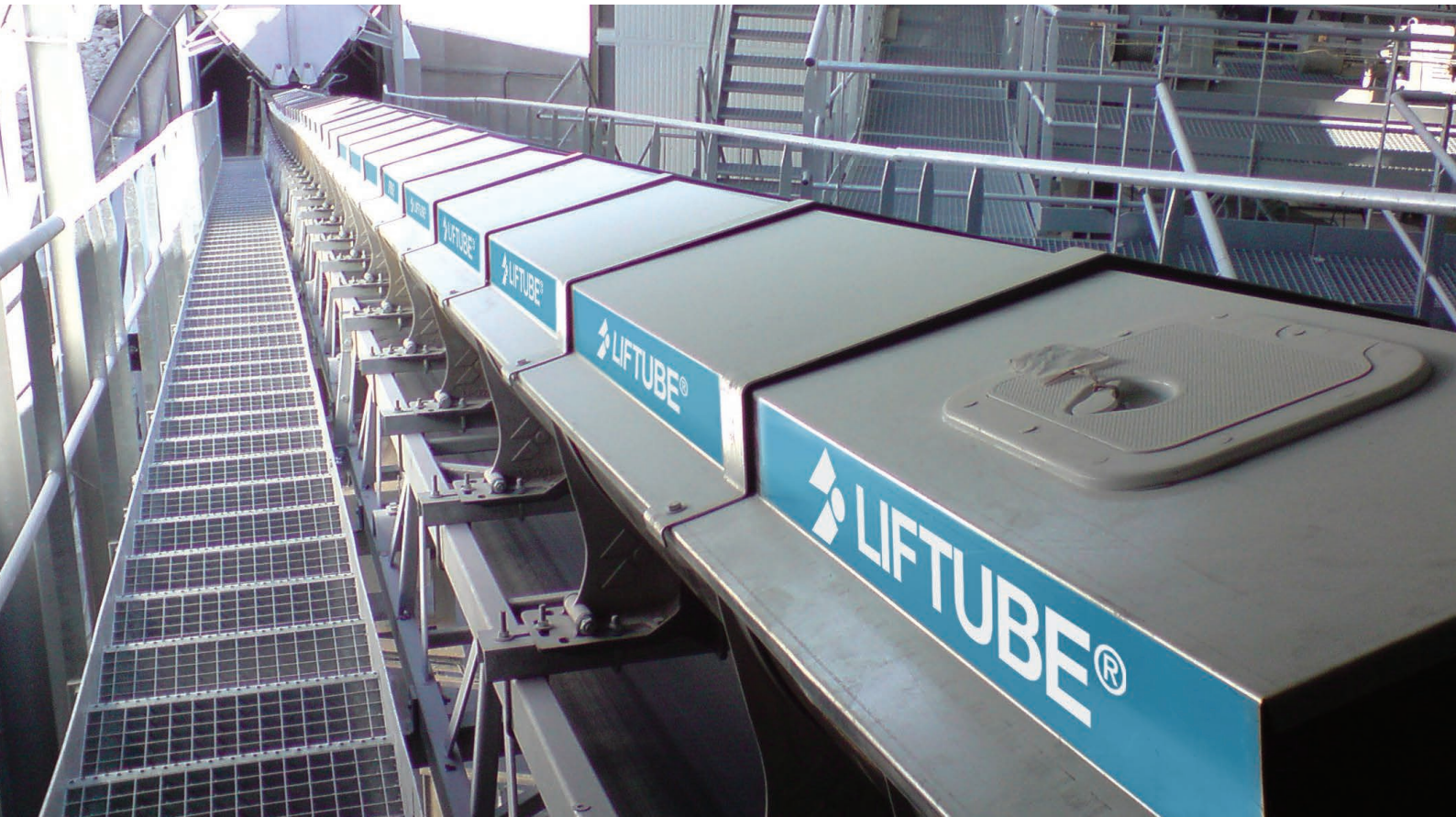


CONVEYOR BELTS OPTIMISATION

LIFTUBE®



INNOVATIVE PROCESSES FOR BULK HANDLING

OUR SOLUTION

Optimize the sealing and safety of all conveyor belts between the loading and unloading points.

This solution enables you to comply with environmental and safety standards while reducing your operating, maintenance and cleaning costs.

OUR CUSTOMERS

- Cement plants
- Steel industry
- Foundries
- Thermal power plants
- Cleaning companies
- Glass factories
- Mines and quarries
- Limeworks
- Coke works
- Incineration plants
- Mills
- Food industry
- Petrochemicals
- Chemicals
- (...)


ADVANTAGES

- Sealing (reduction of dust emissions).
- Staff safety.
- Fast return on investment.
- Removal of material overflow.
- Easy and minimal maintenance.

RELATED SERVICES

- Visits & technical recommendations (proportioning and layout).
- Supply of the installation plan.
- We offer complete installation of our equipment if needed.
- Up to 3-year warranty.
- On-site & external training (STANDARD INDUSTRIE training institute: IFSI - No. 31 59 05660 59).
- After-sales service & maintenance contract.
- Statutory monitoring.

OPTIONS

- High temperature.
- ATEX zone 21. 
- Food industry.
- Auto-extinguishing.





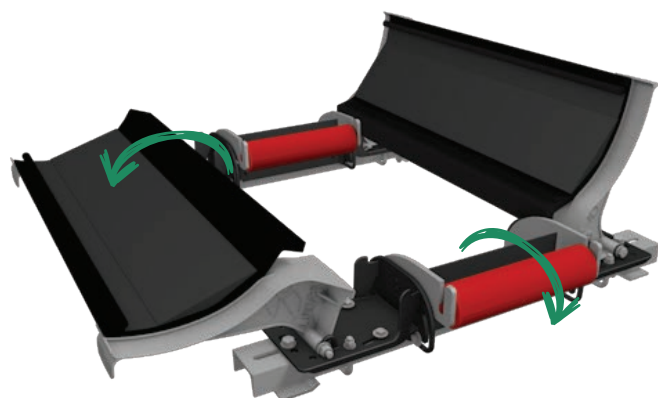
YOUR ANSWER FOR PROBLEMS OF SEALING AND SAFETY: LIFTUBE®

The patented LIFTUBE® system enables the belt to run on a central horizontal tilting roller and to slide on the glideboards, which also tilt.

A removable hood can be adapted to the equipment to reduce belt conveyor dust emission. Only the size of the hood and the central horizontal roller depends on the width of the conveyor.

The conveyor belt and rollers can be easily accessed thanks to innovative tilting glideboards.

- Belt width: From **500** to **1,400 mm.**
- Belt speed: From **0.05** to **5 m/s.**
- Output: Up to **1,500 t/h.**
- Particle size: Up to **500 mm.**
- Density: Up to **4.**
- Product temperature: Up to **300 °C.**
- Modules: **Standard & Evolutive.**
- Installation: **Suitable for both new or existing conveyors.**



DON'T HESITATE TO CONTACT US !

11 BRANCHES & REPRESENTATIVES AROUND THE WORLD

 FRANCE

 SPAIN

 USA

 SOUTH AFRICA

 UK / IRELAND

 ITALY

 CANADA

 CHINA

 GERMANY

 BELGIUM

 MEXICO

 SINGAPORE

