

INDUSTRIAL VACUUM CLEANING

CAM - MOBNET® - VALNET - UMA - INC - GAD - SAM - PAD



INNOVATIVE PROCESSES FOR BULK HANDLING

OUR SOLUTIONS

Our range of industrial vacuum solutions has been developed to meet all your cleaning and pumping needs no matter what your activity and the type of bulk product are.

From 4 to 300 kw, electrical or diesel, fixed or mobile units to trucks with pre-separators and accessories.

ADVANTAGES

- Increased productivity: optimised, quick and safe cleaning.
- Reduction of shutdowns.
- Recycling of the vacuumed product.
- Safety and protection of the employees.
- Respect of the environmental norms, for ex: ISO14000.

OUR CUSTOMERS

- Cement plants
- Steel industry
- Foundries
- Thermal power plants
- Cleaning companies
- Glass factories
- Mines and quarries
- Limeworks
- Coke works
- Incineration plants
- Mills
- Food industry
- Petrochemicals
- Chemicals
- (...)


PRE-SEPARATORS & ACCESSORIES, CONTACT US



OUR SERVICES

- Visits & recommendations.
- On-site test / Demonstration.
- Warranty: from 1 to 5 years, extension possibility.
- After-sales-service visits included in the warranty.
- On-site & external training (STANDARD INDUSTRIE training institute: IFSI - No. 31 59 05660 59).
- Rental & Leasing.
- Inspection contract.
- Maintenance contract.
- Assessment, network study, implementation.

OUR OPTIONS

- Explosion vents / Flame guard.
- ATEX. 
- Absolute filtration.
- Additional sound proofing.
- Blowback.
- Telescopic boom for truck.
- (...)



GAD - SILO

Emptying in Big-bag, a barrel, continuous handling systems, etc.



UMA - CONTAINER

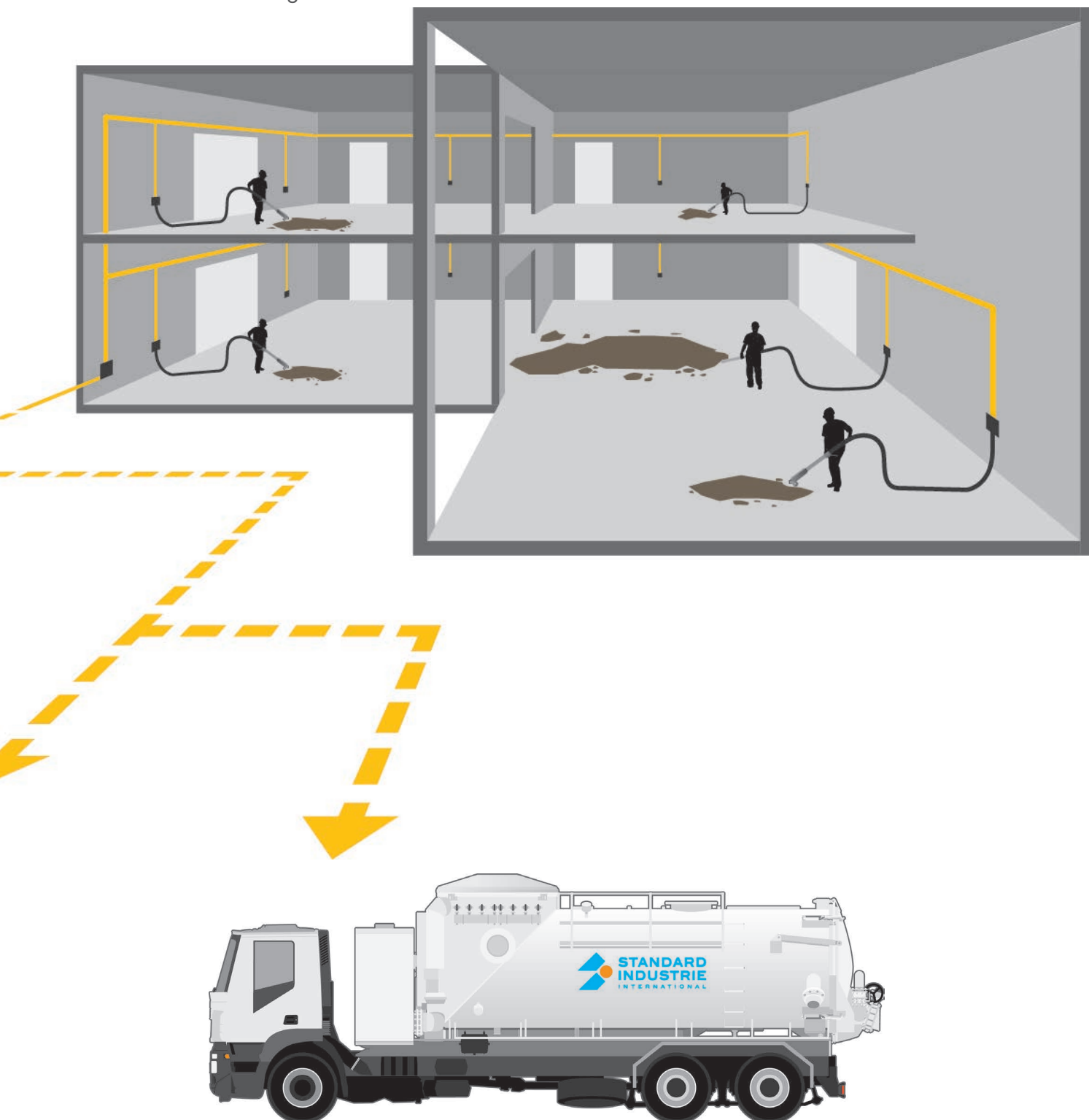
Emptying on the floor, box, pit, etc.

VACUUMING ON A FIXED NETWORK

Our mobile vacuum units, portable and fixed can be connected to pipe networks.

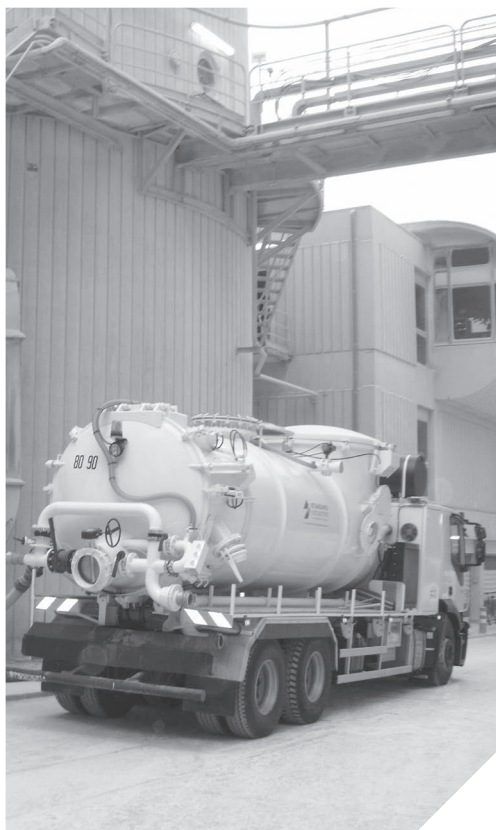
This solution:

- Improves the productivity of the cleaning by vacuuming: reduction in handling of flexible hoses and accessories and increase the vacuuming performance.
- Reinforces the safety of the operators and increase the vacuuming performance.
- Reduces hardworking conditions.



CAM - EMPTYING BY GRAVITY OR BLOWBACK

CAM: TRUCK - HGV LICENCE



THE OPTIMAL SOLUTION: HEAVY WEIGHT VERSION

- Application: **Cleaning & Pumping** vacuum of large volumes and large industrial building sites + **Blowback (option).**
- Motor: **Diesel.**
- Collection: **Tank.**
- Operators: Up to **8.**
- Performance: Up to **40 tons/hour.**
- Air output: Up to **8,000 m³/hour.**
- Vacuum pressure: Up to **8,000 mmWC.**
- Collection capacity: Up to **12.4 m³.**
- Particle size: Up to **80 mm.**

MOBNET®: SELF-PROPELLED - LIGHT VEHICLE LICENCE



THE OPTIMAL SOLUTION: LIGHT WEIGHT VERSION

- Application: **Cleaning & Pumping** vacuum.
- Motor: **Diesel.**
- Collection: **Container.**
- Operators: Up to **4.**
- Performance: Up to **25 tons/hour.**
- Air output: Up to **3,000 m³/hour.**
- Vacuum pressure: Up to **5,000 mmWC.**
- Collection capacity: Up to **4.5 m³.**
- Particle size: Up to **50 mm.**

VALNET: VACUUM VEHICLE - LIGHT VEHICLE LICENCE



VACUUMING ACCESSIBLE BY EVERYONE, FOR EVERYONE & EVERYWHERE

- Application: **Cleaning & Pumping** vacuum.
- Motor: **Diesel.**
- Collection: **Silo.**
- Operators: Up to **2.**
- Performance: Up to **19 tons/hour.**
- Air output: Up to **2,000 m³/hour.**
- Vacuum pressure: Up to **5,000 mmWC.**
- Collection capacity: Up to **0.6 m³.**
- Particle size: Up to **40 mm.**

UMA COMPACT: MOBILE TRAILER - VACUUM UNIT



POWERFUL & STAND-ALONE - ELECTRICAL OR DIESEL

- Application: **Cleaning & Pumping** vacuum.
- Motor: **Electrical** or **Diesel.**
- Collection: **Container.**
- Operators: Up to **8.**
- Performance: Up to **30 tons/hour.**
- Air output: Up to **5,000 m³/hour.**
- Vacuum pressure: Up to **5,000 mmWC.**
- Collection capacity: Up to **6 m³.**
- Particle size: Up to **60 mm.**

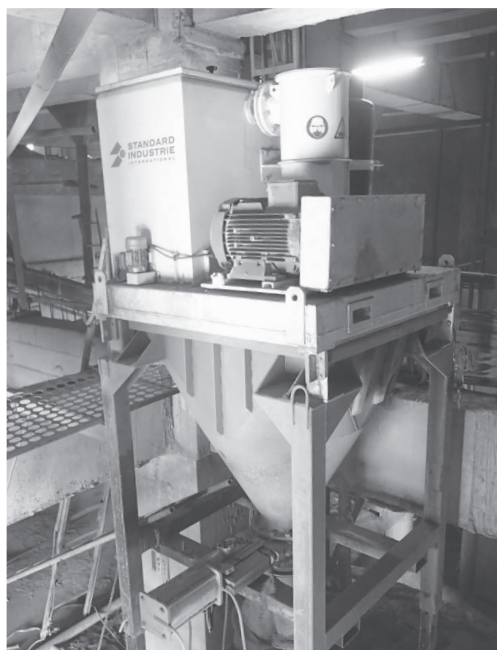
INC: INSTALLATION OF CENTRALISED CLEANING



EASE OF USE AND IMMEDIATE AVAILABILITY BY THE OPERATORS

- Application: **Cleaning & Pumping** vacuum.
- Motor: **Electrical.**
- Collection: **Silo.**
- Operators: Up to **6.**
- Performance: Up to **25 tons/hour.**
- Air output: Up to **4,000 m³/hour.**
- Vacuum pressure: Up to **8,000 mmWC.**
- Collection capacity: Up to **5 m³.**
- Particle size: Up to **50 mm.**

GAD: MOBILE VACUUM CLEANING UNIT




POWERFUL, COMPACT, DISCHARGE IN BIG-BAG... OR CONTAINER

- Application: **Cleaning & Pumping** vacuum.
- Motor: **Electrical.**
- Collection: **Silo or Container.**
- Operators: Up to **4.**
- Performance: Up to **19 tons/hour.**
- Air output: Up to **1,980 m³/hour.**
- Vacuum pressure: Up to **8,000 mmWC.**
- Collection capacity: Up to **1.5 m³.**
- Particle size: Up to **40 mm.**

SAM: MOBILE VACUUM CLEANING STATION




POWERFUL, COMPACT, DISCHARGE IN BIG-BAG... OR CONTAINER

- Application: **Cleaning & Pumping vacuum**
- Motor: **Electrical**
- Collection: **Silo or Container**
- Operators: Up to **4**
- Performance: Up to **6 tons/hour.**
- Air output: Up to **2,500 m³/hour.**
- Vacuum pressure: Up to **3,500 mmWC.**
- Collection capacity: Up to **1.5 m³.**
- Particle size: Up to **40 mm.**
- Versions: **Standard or ATEX zone 21.** 

PAD: INDUSTRIAL VACUUM CLEANER



MOBILE, SIMPLE AND LARGE COLLECTION CAPACITY

- Application: **Cleaning vacuum.**
- Motor: **Electrical.**
- Collection: **Container.**
- Operators: Up to **2.**
- Performance: Up to **6 tons/hour.**
- Air output: Up to **1,320 m³/hour.**
- Vacuum pressure: Up to **3,400 mmWC.**
- Collection capacity: Up to **450 L.**
- Particle size: Up to **30 mm.**
- Versions: **Standard or ATEX zones 21 and 22.** 

DON'T HESITATE TO CONTACT US !

11 BRANCHES & REPRESENTATIVES AROUND THE WORLD

 FRANCE

 SPAIN

 USA

 SOUTH AFRICA

 UK / IRELAND

 ITALY

 CANADA

 CHINA

 GERMANY

 BELGIUM

 MEXICO

 SINGAPORE

