

# BLOCKAGE & BUILD-UP REMOVAL

AIRCHOC® - MACSYS



INNOVATIVE PROCESSES FOR BULK HANDLING

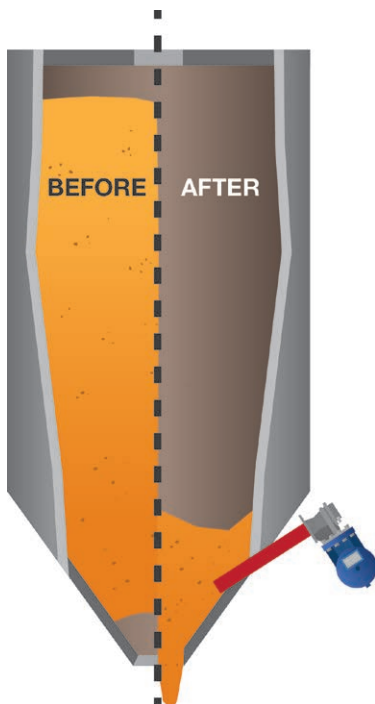
## OUR SOLUTIONS

Powerful and innovative solutions for eliminating clogging and build-up.

We offer preventive solutions to enable you to optimise productivity and help you to recover all your storage capacity.

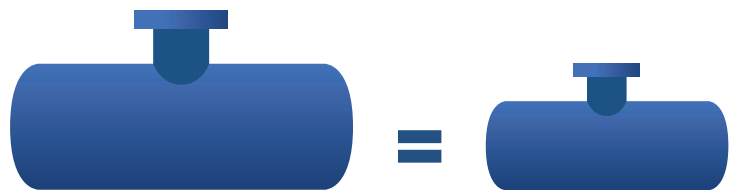
### IN USE AT

- Cement plants
- Steel industry
- Foundries
- Thermal power plants
- Cleaning companies
- Glass factories
- Mines and quarries
- Limeworks
- Coke works
- Incineration plants
- Mills
- Food industry
- Petrochemicals
- Chemicals
- And more...



## ADVANTAGES

- **Impact:** Aerodynamics of the head / Ratio between the volume of the tank and the diameter of the head output
- **Safety:** No blast with air pressure drop
- **Quality:** Fully galvanized tank / Cast iron head / Extended lifetime
- **Maintenance:** Direct easy access to the mechanism
- **Reliability:** Protected quick exhaust valve / Self-aligning piston



*Les Consumption, same power for improved efficiency*

## RELATED SERVICES

- Visits & technical recommendations (dimensioning & positioning)
- Supply of the installation drawing
- We offer complete installation of our equipment if needed
- Up to 3-year warranty
- After-sales service & maintenance contract
- Standards compliance

## OPTIONS

- **Stainless steel chamfer piston:** Increased lifespan and aggressive atmospheres proof (chemicals, incineration, cement works)
- **Pneumatic distributor:** Activates AIRCHOC®/MACSYS blasts pneumatically by positive surge


## ACCESSORIES

- **Deflectors:** Direct the air flows towards sensitive clogging zones - Steel or refractory stainless steel version
- **Insulation device:** Secured maintenance operations: high temperature, aggressive products, back flow risk
- **Safety device:** Safe use AIRCHOC®/MACSYS (pressure gauge, pressure relief valve, shut-off valve etc.)

# AIRCHOC® - MACSYS

## YOUR ANSWER FOR BLOCKAGE & BUILD-UP REMOVAL:

### AIRCHOC®

- **AIRCHOC®** acts preventively on the product
- **Compressed air** from **4** to **400 L** is instantly released through a suitable outlet port
- **50** to **200 mm** nominal outlet diameter
- Suitable for **high temperatures**
- Available option:
  - **ATEX Zone 20** 
- Additional options:
  - Automatic guillotine
  - Control and monitoring unit
- More than **50 000 AIRCHOC®** installations in more than **90 countries**



## SOLUTION FOR SECURING AREAS WITH DIFFICULT ACCESS:

### MACSYS

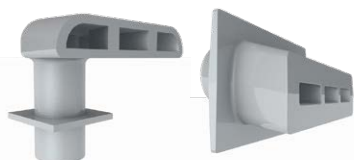
- Number of heads **2** to **8**
- Nominal outlet diameter of **100, 150, 200 mm**
- Tank capacity of **200 L**
- **Reinforced metal** or **rubber** flexible tubes
- Suitable for **high temperatures**



## ACCESSORIES AND SPARE PARTS



Piston



Deflectors



Guillotine isolator



Blowpipe

## AIRCHOC® MAINTENANCE PROGRAM

THE MOST COST EFFECTIVE SOLUTION and a preserved environment

To eliminate the risk of production stoppage or excessive waiting time for the operators, **STANDARD INDUSTRIE** has developed a maintenance system:

- 1 A case containing a complete **AIRCHOC®** mechanism is kept in stock by the **AIRCHOC®** user.
- 2 As soon as maintenance is required, the used mechanism is simply replaced by the mechanism contained in the case.
- 3 The used mechanism is then simply replaced into the case and shipped to **STANDARD INDUSTRIE** to be cleaned and repaired by our specialized technicians.
- 4 The case is finally sent back to the user for use during the next maintenance.





# ***SWITCH TO THE NEWER GENERATION OF AIRCHOC® AIR CANNONS***

*For effective removing of build ups in your production process*

## ***User expectations***

*100% available air cannons*



*Cleaning performance*



*Economy of use*



## ***AIRCHOC® 6 promises***

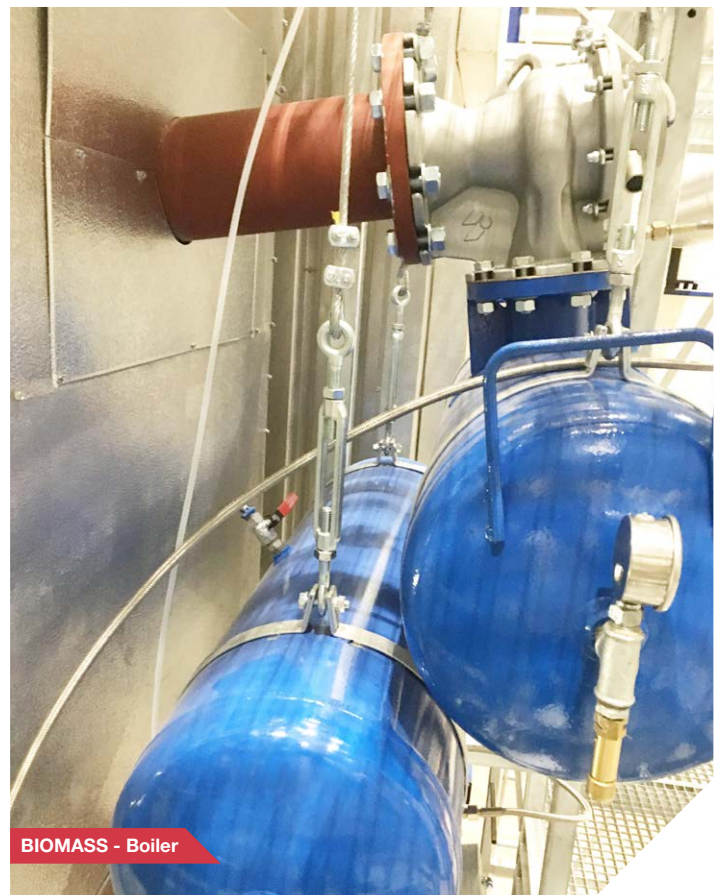
*3 years of shooting cycles without replacement of the trigger system*

*Better impact force on clogging  
10% higher than the previous version*

*Fewer spare parts and reduced air consumption*



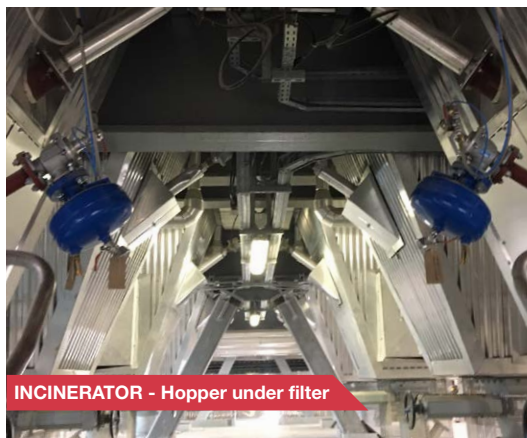
**SAND - Storage hoppers**



**BIOMASS - Boiler**



# AIRCHOC® - MACSYS



INCINERATOR - Hopper under filter



QUARRY - tunnel under stock pile



CEMENT - Feeding chute



CONCRETE PLANT - Silo



CEMENT PLANT - Kiln Inlet



FOOD INDUSTRY - Storage silo



## CONTACT US !

## 11 BRANCHES & REPRESENTATIVES AROUND THE WORLD

